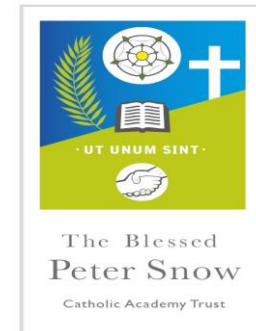

Catholic Academy Trusts

Jan 2022

Blessed Peter Snow



Our Growing Family of Schools
Our Trust



Diocesan Trust Model

Bishop Marcus has endorsed the future pathway with his requirement for all schools to become part of a family

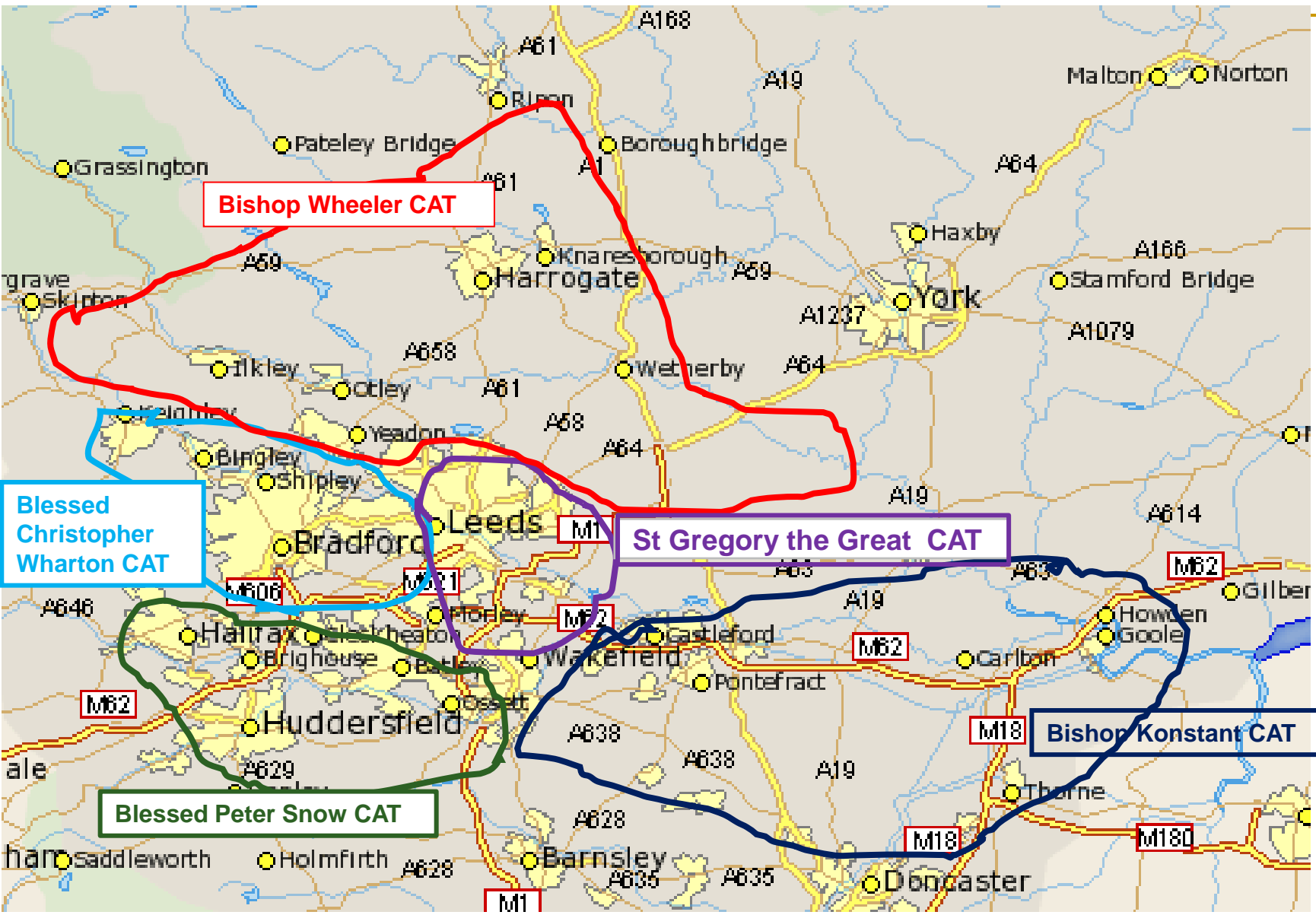
My conviction comes from the faith that we share as one family in the Church; faith in Lord Jesus Christ who will guide us with His light and sustain us with His grace as we make this journey. The strength of any family is in the quality of its relationships. This is evident when its members, respecting the dignity of each, work together for the good of one another and in the service of the common good. This too will be our strength in the years ahead if, as a diocesan family of schools, we are able to build relationships, forge solidarity and develop a collaborative framework of family groups of schools that is resilient to present and future challenges, and provides us with the confidence to take advantage of new opportunities.

What is a Catholic Multi-Academy Trust?

- A Catholic Multi Academy Trust is simply a number of Catholic Schools who agree to work together within an overarching trust body.
 - The Diocese of Leeds has suggested groupings to explore the Catholic Multi Academy Trust to avoid any school being left isolated.
-

Catholic Academy Trusts

- Formally group schools under one legal organisation – the Catholic Academy Trust
 - They are independent state schools responsible to the Bishop and Secretary of State for Education – **as now**
 - Local authorities are responsible for co-ordinated admissions, safeguarding and SEN – **as now**
 - Our partnership has a shared vision for Catholic Academy Trust schools whilst retaining each school's individual characteristics and ethos
-



The Landscape 2021 - 2022

■ Bishop Konstant Catholic Academy Trust

English Martyrs Catholic Primary , Holy Family and St Michael's Catholic Primary, Sacred Heart Catholic Primary, St Austin's Catholic Primary. St Benedict's Catholic Primary, St Ignatious Catholic Primary, St John the Baptist Catholic Primary, St Joseph's Catholic Primary in Goole, Castleford, Moorthorpe and Pontefract, St Mary's Catholic Primary, St Thomas a Becket Catholic Secondary, St Wilfred's Catholic High school and sixth form, The Holy family Catholic High School.



■ Bishop Wheeler Catholic Academy Trust

Sacred heart. St Mary's Horsforth, Knaresborough and Menston, St Joseph's Pudsey, Harrogate and Otley, St Peter and Paul, Holy name, St Stephen's, St Roberts, St John Fisher



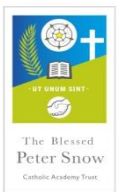
■ Blessed Christopher Wharton Catholic Academy Trust

Our lady of Victories Catholic Primary, St Anne's Catholic Primary, St Joseph's Catholic Primary Keighley, St Winefride's Catholic Primary, St John the Evangelist Catholic Primary, St Walburga's. St Francis, St Cuthberts and the First Martyrs'. St Anthony's in Clayton, Shipley and St Joseph's in Bingley. St William's Catholic Primary, St Columbas Catholic Primary, Our Lady and St Brendan's Catholic Primary



■ Blessed Peter Snow Catholic Academy Trust

St John Fishers Catholic High School, Sacred Heart Catholic Primary, St Malachy's Catholic Primary, St Joseph's Catholic Primary (Dewsbury), St Patrick's Catholic Primary Elland and Birstall, St Mary's Catholic Primary (Halifax), Our lady of Lourdes Catholic Primary (Huddersfield)



■ St Gregory the Great Catholic Academy Trust

St Paul's Catholic Primary, Corpus Christi Catholic College, Sacred Heart Catholic Primary, St Urban's Catholic Primary, Immaculate Heart of Mary Catholic Primary, St Augustine's Catholic Primary, Holy rosary and st Anne's Catholic Primary, Christ the King Catholic Primary



- Blessed Peter Snow Catholic Academy Trust will have the following schools in it (please note: all are converting at different times)

- Sacred Heart, Sowerby Bridge
 - St Malachy's, Halifax
 - St John Fisher High School, Dewsbury
 - St Joseph's Brighouse
 - St Joseph's Halifax
 - St Patrick's Elland
 - St Mary's Halifax
 - St Joseph's Dewsbury
 - Holy Spirit Heckmondwike
 - St Paulinus Dewsbury
 - St Mary's Batley
 - St Patrick's Birstall
 - All Saints Catholic College Huddersfield
 - Our lady of Lourdes Huddersfield
 - St Patrick's Huddersfield
 - St Joseph's Dalton
-

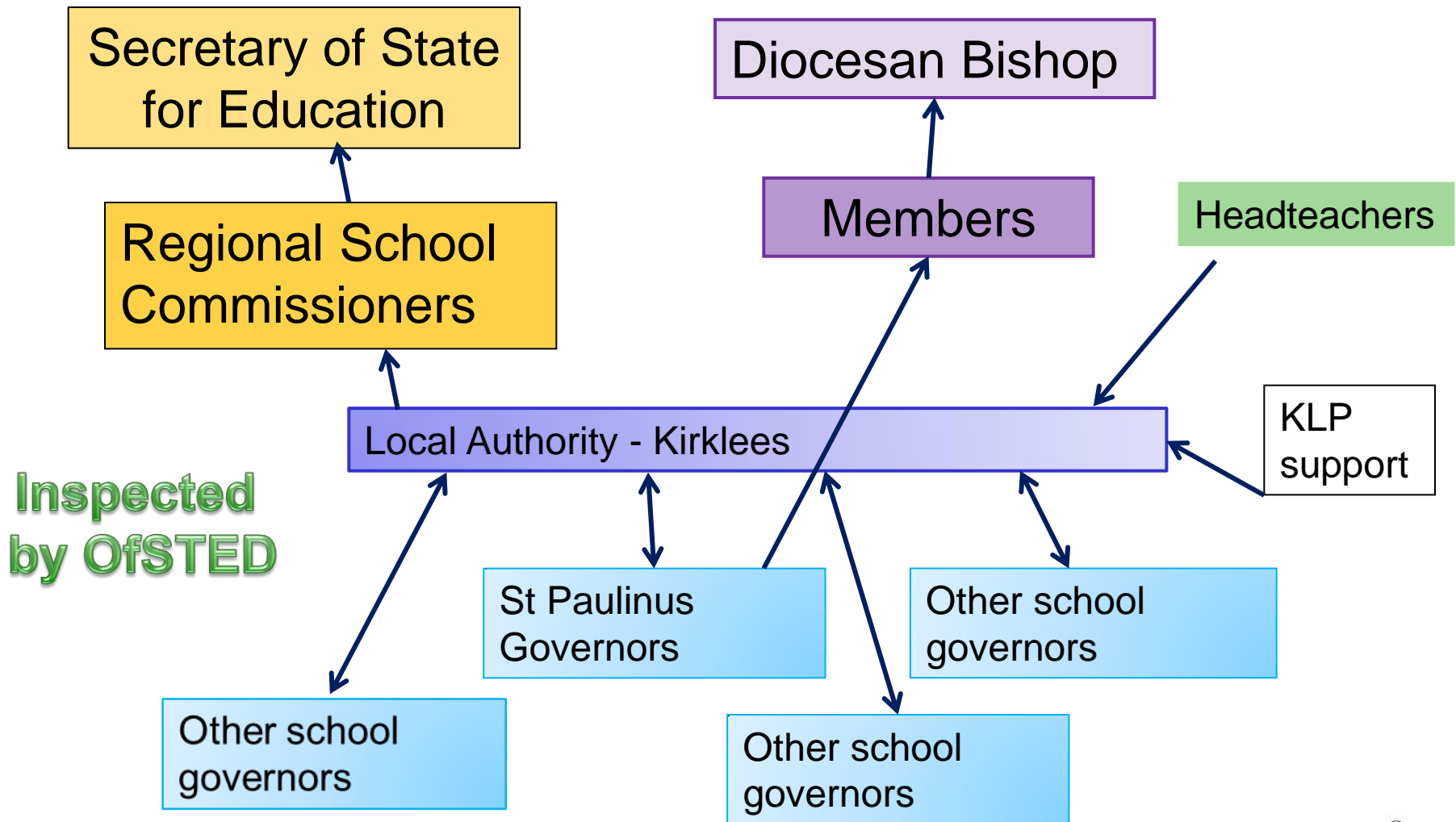
Catholic MAT – Key Principles



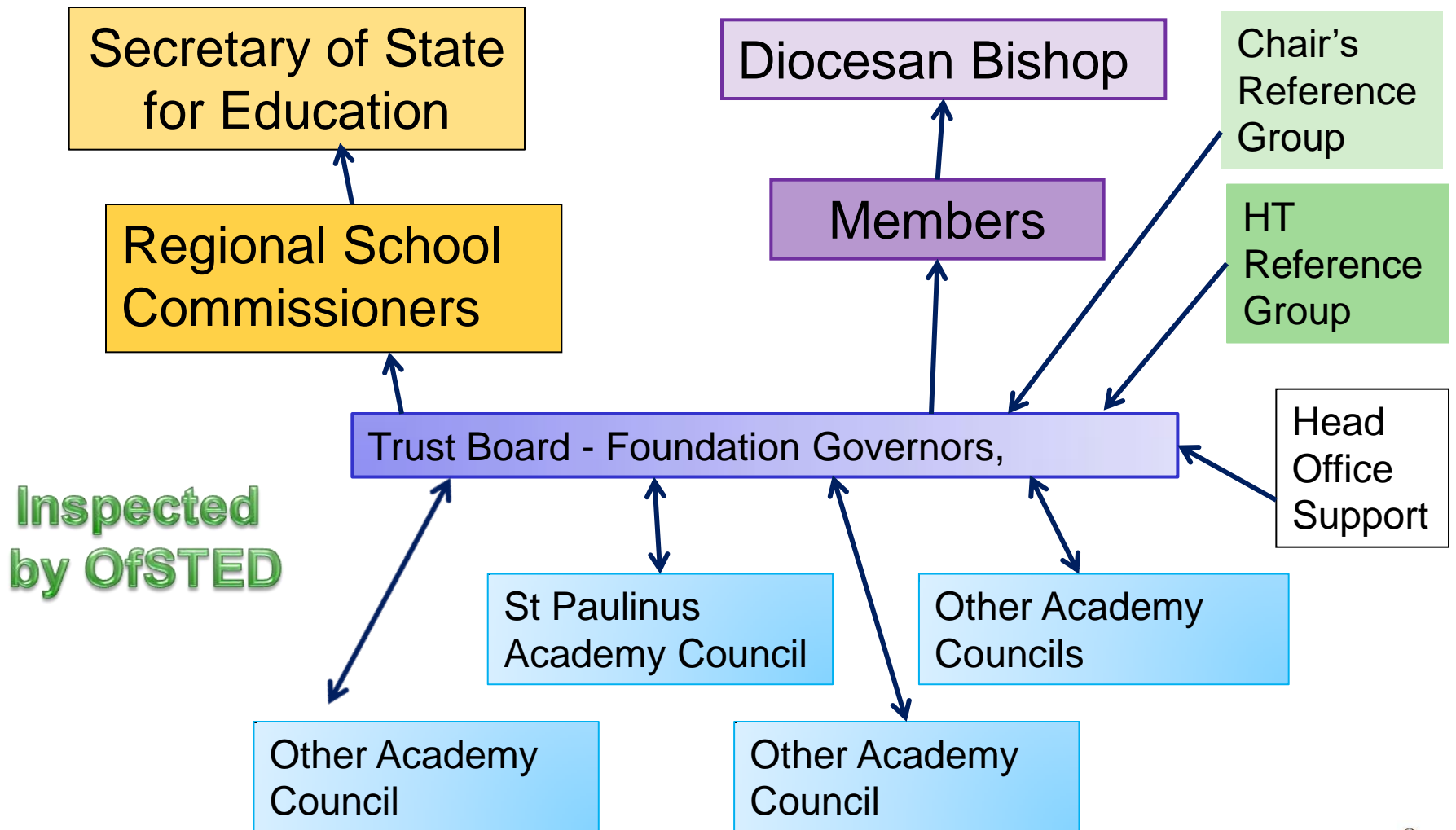
Q: Why is it beneficial to become part of the CMAT? (Q: What changes do you envisage on joining the CMAT?)

- Greater protection for individual schools in a rapidly changing political, financial and educational climate;
 - Opportunities to share expertise, facilities and resources from specialist teachers across a trust that will benefit all;
 - Formalised school liaison allowing joint liaison and working together to provide the best quality of provision for the benefit of local children and young people;
 - Improved use of individual school's finances though economies of scale offered by the bulk acquisition of services and resources;
 - Applications for funding as a group of schools are likely have more success than by individual or small groups;
 - We can be creative in how we spend our funding to maximise the value for our schools eg: with extended services such as educational psychologists, speech and language
 - A central team working for the Trust to enable Senior Leaders to focus more on teaching and learning and less on eg: project management or procurement
 - All schools working on the same financial systems with an accountant supporting at least once a month
-

LA Accountability – current model



CMAT Accountability



Typical Timeline for a straightforward conversion (4 -5 months)

1

- Application to Diocese following resolution being passed

2

- Approval from Diocesan Trustee
- Application to DfE, parental consultation, SI strategy

3

- RSC/DfE approval and appoint project lead
- Due diligence, preparation of documents
- Land questionnaires, finance, TUPE

4

- Confirmation of CTA and land leases
- Responses to DfE questions
- Agreed documentation including leases signed by all parties

5

- Details of Bank account to DfE/ESFA

6

- Conversion and post conversion support

We are currently at stage 4 and 5 as outlined on the previous slide.

St Paulinus will be joining the Trust on the proposed date of

1st March 2022.

This date is subject to Kirklees, School and Trust capacity

Building Capacity in BPSCAT

- Aiming for all schools joining together- advantages here;
 - Proposed date to aim for - September 2022;
 - Autumn term 2019 – Further directors joined the Trust Board and the Trust developed capacity by working with the family of schools who are going to be joining.
 - Spring - Summer term 2020 – recruitment process for agreed positions in the Trust e.g. CEO, Finance team and HR team, followed by School improvement and Governance services.
 - Spring 2022 – 2 posts have been advertised for the trust
-

Further questions or comments?

Questions received so far from the previous consultation.

Will the admissions change? The trust board are the legal admissions authority, and are bound by exactly the same law, government guidance and diocesan protocols as all our Diocesan schools. There will be no changes to admissions policies as part of this process. If any school within a CMAT wished to change its admission policy it would have to follow exactly the same process of consultation and Diocesan approval as at present.

What guarantees are there that the school will remain good if they join the Trust? There are no guarantees that the school will remain good but this is not dependent on us joining the Trust. The school could improve to outstanding or drop to RI whether it is in the Trust or not. The benefits of joining the Trust are that we can access more support immediately from other schools, or a teaching school and from consultants/ staff employed by the Trust who are there just for us rather than for all the schools in Kirklees. It would also mean that it is not as expensive for us to access this support meaning that the school is more likely to be able to afford extra.



Will the recreational fund be scrapped if the Academy is fully funded?

We are waiting to confirm this and looking into it. At the moment our voluntary contribution fund of £19.50 per family per year goes towards the upkeep of the buildings and land e.g. new roof, electric works, new fire system etc as we have to contribute 10% of the costs of these works unlike non-voluntary aided schools. I believe that when we convert to academy we are still a voluntary aided academy so it may remain the same. I will let everyone know more as soon as I do.

If we are not part of Kirklees, does this mean the attendance policy and penalty notices will be changing?

There will be a transition period as we move from an LA school to the Blessed Peter Snow so it is unlikely that this will change in the first year. The school intends to continue to buy into some Kirklees services as we do at the moment until the Trust is fully formed. Once the Trust is established, it is likely that we will adopt the Trust attendance policy – at this moment in time, I do not know what that policy looks like as it has not been shared with us yet. I will make any policy changes clear to parents as I do now and all current policies followed by the school will be on the website as we have them now. It is worth noting that current information says that academies still issue the same sanctions as the LA and that Kirklees will still issue penalty notices when we convert as they do this for other academy schools in the area.

What about the situation with St John Fisher? Does the Trust have capacity to support them now?

The Trust board has recently grown, it is led by an experienced chair who has a proven track record of successful school improvement. There is also a new Intervention Board organised as a focus for St John Fisher improvements. Having met the new members of the Trust board, and spoken to all the heads of the joining 16 schools, I am confident that we will be entering a strong trust that has the capacity to support those who need it without diminishing the provision for the schools who don't need that at the moment.

The leadership of the CMAT was a different context when St John Fisher received its inadequate Ofsted. This was replaced by an Intervention Board which is still in place for St John Fisher's.

Every CMAT in the Leeds Diocese has at one stage or another had an inadequate school in it.

It is worthy of note that St John Fisher's results this summer 2019 were in the top half of all secondary's in many aspects which evidences the effective work of the Intervention Board and staff of the school.

St John Fisher's will be just 1 school out of 16 in the CMAT.

The CMAT now has a different set of people on the Trust Board who have been recruited over the summer based on their relevant skills sets to ensure that there is the broad range of expertise needed.

CHAIR

Patricia Stabler

VICE CHAIR

Father Martin Kelly

St John Fisher information from 2019:

- They are not the Trust, they are only one school in the Trust.
- While they need help now, it may be us in the future, so we need to be helping them and one way we can do that is join the Trust.
- All reports from parents from this year have been quite positive for St John Fisher and what they are seeing up there:

Excerpt taken from Holy Spirit Catholic Primary School newsletter Oct 19

I know that at this time of year it is a particularly anxious period for parents of our Year 6 children. The responsibility for choosing the “right school” can weigh heavily on us. With this in mind, I wanted to share the positive experience we have had so far, having chosen St. John Fisher as my son’s high school.

I have visited the school on several occasions and spoken to the staff personally and I can’t praise them enough for their support and help settling in the new Year 7 children. The school has invested in online support systems such as SIMS and FROG, which allow parents direct interface with the school and the ability to monitor behaviour, attendance and homework amongst other things. You can even check exactly what your child has for their lunch each day! They work hard to ensure the Year 7 children have as seamless a transition as possible and are on hand to help when you need it.

The children are supported by a very committed staff and together their work is paying off. St John Fisher are celebrating an 18% improvement in their GCSEs results this year, which takes them above the national average. The Year 11 students worked incredibly hard and the school is justifiably proud of this achievement. Work now continues into this year and a parental information evening has already been held to ensure families understand what is ahead.

In other year groups the school has seen a great start to the academic year and new CARE values - Commitment, Aspiration, Respect, Excellence - are underpinning all aspects of school life for both students and staff.

St John Fisher has worked hard through difficult circumstances to ensure the standards are being raised and that they become the best school they can be. Having benefited from a great start to your children's academic journey in our school, I hope that you will take advantage of continuing their Catholic education and bless the high school with your children. It is a great way to support our whole Catholic family by ensuring our high school succeeds in their endeavours to provide the best education and support for our young students on their onward journey in to adulthood whilst upholding the values of our faith.

Thank you
Clare Naughton Foundation Governor at Holy Spirit

Will the school lose it's current OfSTED rating? No the current rating will remain in place until the next OfSTED – just as it does now.

Will academic standards and progress be monitored in the same way?

Yes, Academies are still subject to OfSTED inspections, they are still accountable to similar organisations including the DfE etc it will just be the Trust board instead of the LA. In some ways, it may be that we are even more accountable as the CEO will have 16 schools as opposed to an LA who may have hundreds of schools to cater for.

Can St Paulinus make independent decisions or will they have to follow the same pathway?

The vision of a CMAT is that we are still our own school, so (just as we do now with Kirklees) there will be some Trust policies we will follow and there will be other decisions that we can make that make us unique. **Our Trust schools will still retain their individuality and will not be clones of each other. UNITY not UNIFORMITY**

Joining is an exciting time for the school – it will help us financially and formalise all the informal collaboration we take part in now with the other schools. It will benefit our children with funds and with access to school improvement which will hopefully help us on our journey to outstanding and to become a teaching school in the future.

So what will it mean for our children, parents/carers?

On a day to day basis, the children and parents will not see any obvious difference.

Our Trust Board will be working very closely with all the Headteachers to ensure that our individual identities as a school are protected.

Our children:

- will come to the same school building
- will work with the same staff
- will wear the same uniform
- will serve and live as a part of the same Parish
- will be part of their local community and take part in project links with other local schools.

Parents of children in other academy schools say they have not noticed any difference: ***Sacred Heart Sowerby Bridge, St Malachy's Ovenden, St Walburga's Bradford, St Winefride's Bradford, English Martyrs Wakefield.***

Any further questions or comments?

